

Instruction

Technical Parameters:

Working voltage: AC 220V

Static working current: $\leq 10\text{mA}$

Working temperature: $-40\text{ }^{\circ}\text{C} - +80\text{ }^{\circ}\text{C}$

Receive sensitivity: $\geq -95\text{dB}$

Working frequency: commonly used 315MHz, 433.92MHz (other can be customized)

Output current: $\leq 10\text{A}$

Working mode: jog, self-locking, interlocking (adjustable)

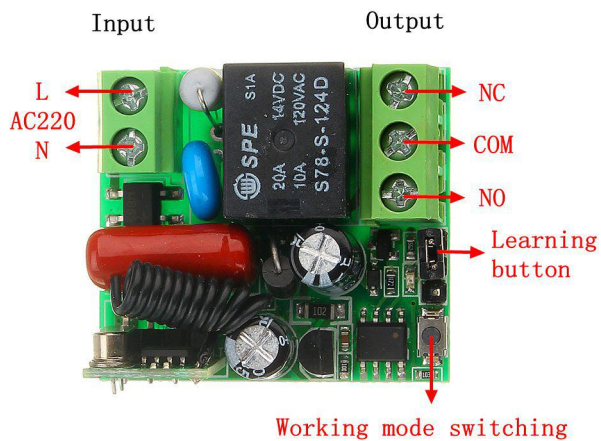
Output mode: contact output (controllable AC, DC)

Size: 35*32*17mm

Scope of application:

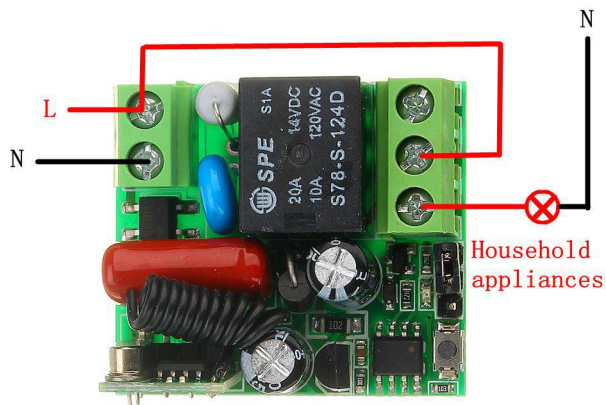
This product is controlled by intelligent microprocessor, which can be applied to garage door control, lighting control, remote control curtains, access control system and various motor control systems. Small size, easy to install, safe and reliable.

The schematic diagram of the AK-RK01S-220 learning fixed code controller is as follows:



Basic connection of learning type 220 volt single remote control switch AK-RK01s-220

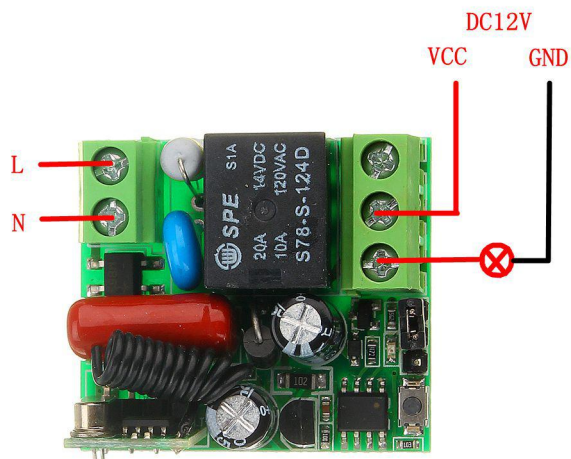
1, connected to 220 volt AC output diagram, as shown below



L: FireWire, N: Neutral

As shown above, the learning type 220 volt single-channel remote control switch AK-RK01SW-220, the input terminal is connected to the AC supply of 220, the live wire is connected to the common end of the relay, the normally open end is connected to the load, and the neutral line is directly connected to the load. Note, this figure uses electrical appliances for AC220 volts.

2, learning type 220 volt single remote control switch AK-RK01S-220 control DC equipment, wiring method is as follows:



As shown in the figure above, the learning type 220V single remote control switch AK-RK01S-220 input terminal, connected to a 220 volt AC power supply. The common end of the output terminal is connected to the positive pole of the DC power supply, and the positive pole of the appliance is connected to the normally open end, and the negative pole is connected to the

negative pole of the direct current. The DC power supply can be from 0V to 48V.

Learning method:

When the power is turned on, the indicator light is always on. After the long press of the learning button 2~3, the indicator light will automatically go out. Release the learning button and press any button on the remote control. The indicator light flashes 5 times, indicating that the learning is successful.

★Note: This controller can learn 16 remote codes of fixed code and learning code, such as fixed code and any button. If it exceeds, the earliest learned remote control will be cleared.

Clear method:

Press and hold the learning button for about 8 seconds. The indicator will turn off and return to light.

Work mode switching:

Jog: Jumper is not inserted

Self-locking: Terminate 1 2 with a jumper

Interlock: use a jumper to terminate 2 3

Working mode explanation:

Jog: Press and hold the remote control relay to turn it on, release the relay to disconnect

Self-locking: press the remote control, the relay is turned on; press the same button again to disconnect the relay

Interlock: press the remote control, the relay is turned on; press another button, the relay is disconnected