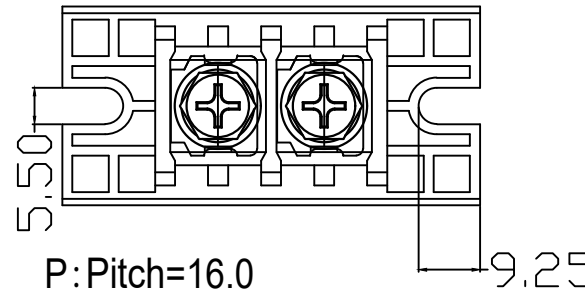
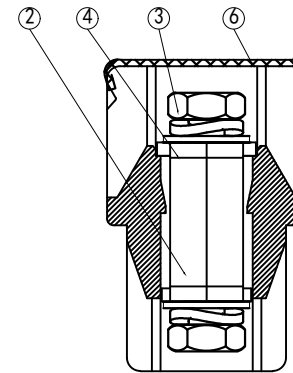
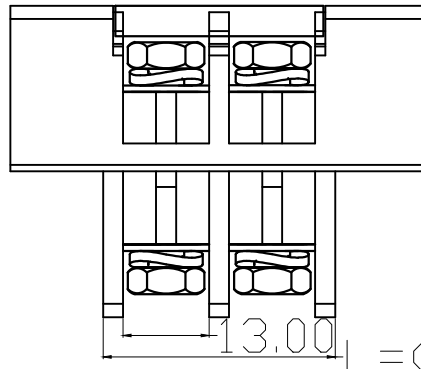
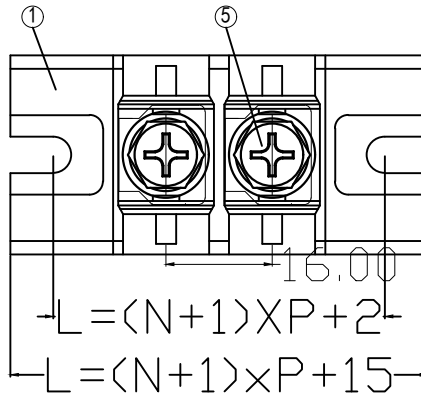
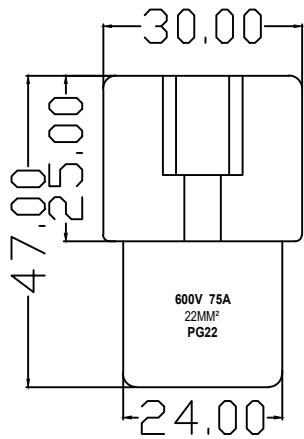


Version	Description of changes	Drawing	Dates



P: Pitch=16.0
N: Number of Positions

Technical requirements:

- The surface of the shell should be free of shrinkage, floating fiber and other phenomena.
- The screws should not slip or jam and other undesirable phenomena.
- Solderability should meet the requirements.
- Screw torque: 22 lbf-in.
- Crimp range: 22mm²(Max).
- Rated parameter: 600V, 75A.
- Industrial frequency withstand voltage: 2500V (1 minute without abnormality).
- Pulse withstand voltage: 6000V, positive and negative 5 times each.
- Insulation impedance: DC500V 1000MΩ or more.
- Operating temperature:-40°C~105°C.
- x is the key test size.

6	Transparent Cover	2020T160XX	PC	1	
5	M6 Screws	S060170001	C1018	2N	
4	Conduit Bar	L220110001	C1018	N	
3	M6 Nuts	M060050001	C1018	2N	
2	11 Middle Column	2020G00100	PBT	N	
1	Shell	2020G211XX	PBT	1	
ITEMS	NAME	PART NO.	MAT'L	QTY	REMARK

DIMENSIONS	TOLERANCES	PROJECTION	TITLE			
ANSI Y14.5M UNITS: MM Pro/E FILE	>100 ±1.0 30-100 ±0.6 0-30 ±0.30 ANGLES ±1°		PG22-11-16.0-02P-C			
ORIGINAL NOT FOR CUSTOMER DISTRIBUTION	THIS DOCUMENT CONTAINS PROPRIETARY INFORMATION WHICH IS THE CONFIDENTIAL PROPERTY FORANY TECH CHINA		ENGR YIY	SIZE B	DWG NO. XXX	REV A
			CHKD YIY	SCALE: 1.0		SHEET: 1 OF 1
			APPD YIY			