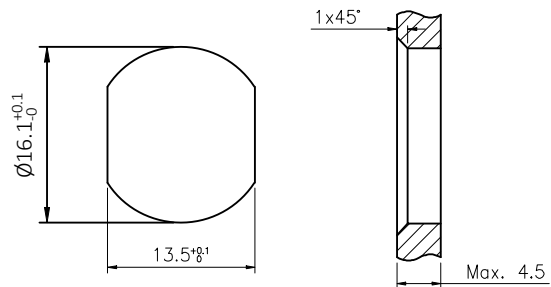
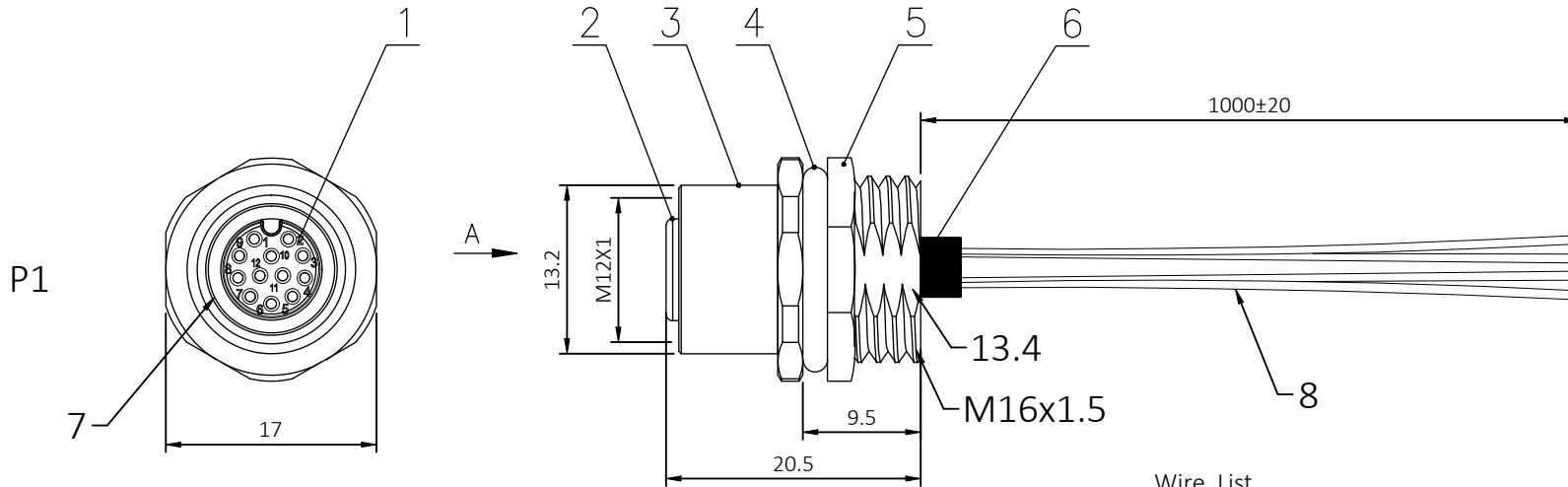
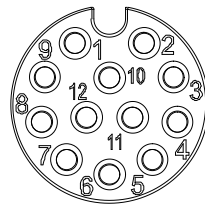




ISSUE	DESCRIPTION	DWN	DATE	APPROVEN
R1.0	First issue	Ding	2024/08/06	JIM.KING



Recommended Panel cut-out



Pin Assignment Front View
M12 female A-Coding 12PIN

Wire List

P1(M12 female)

PIN 1	brown
PIN 2	blue
PIN 3	white
PIN 4	green
PIN 5	pink
PIN 6	yellow
PIN 7	black
PIN 8	grey
PIN 9	red
PIN 10	violet
PIN 11	grey/pink
PIN 12	red/blue

8	Cable	AWG26	12
7	O-Ring	Rubber, Black	1
6	Tube	Heat shrink tube,black	1
5	Nut	Brass,Nickel-plated	1
4	O-Ring	Rubber, Black	1
3	Body	Brass,Nickel-plated	1
2	Housing	M12 12Pin Female A-Coding,PA66,Black	1
1	Pin	Brass; Gold-plated	12
No.	PART NAME	DESCRIPTION	Q'TY

-TOLERANCES- UNLESS OTHERWISE SPECIFIED	RENHOTEC GROUP	
	PART DESCRIPTION: M12 Female A-Coding 12Pin (Rear fastened)	
UNLESS OTHERWISE SPECIFIED TOLERANCES FOR MILLIMETERS ARE: 0.5 - 8mm ± 0.20mm 8 - 30mm ± 0.25mm 30 - 120mm ± 0.30mm	Appr: JIM.KING	P/N: EB-400-2111
	Check:	Date: 2024.08.06
	Draw: DING	Scale: Free
		Unit: MM
		Type: Z
		Page: 1/1